



SECURE LOGIC™



Congratulations and thank you for purchasing the ETL® SecureLogic™ Wall Vault™. Your new Wall Vault™ is a high quality security product, that can be used to store a variety of items out of reach of children or other unauthorized persons. Please read through the following instruction guide carefully before installing your Wall Vault™.



PACKAGE CONTENTS

1. Wall Vault™
2. Battery Charger
3. Mounting Bolts (4)
4. Washers (4)
5. Allen Wrench
6. Keys (2)
7. Installation Guide
8. Quick Reference Card/Template
9. Warranty Card

TABLE OF CONTENTS

Warnings & Recommendations	pg. 3
Standard Features	pg. 5
Installation Instructions	pg. 7
Programming Model 20700	pg. 9
Programming Model 20710	pg. 12
Operating Instructions	pg. 13
Maintenance Instructions	pg. 15
Security Features	pg. 16
Trouble Shooting	pg. 17
Warranty & Registration	pg. 18




WARNINGS AND RECOMMENDATIONS


Anything in this installation guide that has been written in *Italics* is a WARNING. Failure to observe these instructions constitutes a MISUSE of this product and may result in serious physical injury or DEATH.

NO UNAUTHORIZED REPAIR

The Wall Vault™ is serviceable at the factory only. Any tampering, unauthorized repair and/or modification will void all warranties, and may cause the safe to fail unexpectedly, or be damaged. If in doubt, call Customer Service at 1-209-529-3546.

FIREARM SAFETY

 **WARNING:** *The Wall Vault™ or any other firearm storage device cannot take the place of other safety procedures including advising children of the dangers of firearms.*

 **WARNING:** *The manufacturer and distributors of the SecureLogic™ Wall Vault™ do not recommend, suggest, advise, promote or otherwise condone the ownership of firearms.*

RECOMMENDATION: The touchpad and biometric sensor on the control panel are electronic. They have a certain feel to them and may seem different to different people. It is important that you become accustomed, through practice, as to how the Wall Vault™ responds to your personal touch.



⚠ WARNING: *Never grab your firearm by the trigger when removing or placing into the Wall Vault™. Make sure your firearm's safety mechanism is on.*

⚠ WARNING: *Always follow the firearm safety rules set out by the firearm's manufacturer.*

IMPORTANT NOTICE:

- Vault must be in vertical position and installed on a vertical wall in order for door to drop open
- Door must be open in order to install
- Designed to install between 16" studs on center
- Recommended installation height is approximately 5 feet from the floor. The Wall Vault™ must be clear from obstruction 10" below
- Once installed, allow battery to charge for 12 hours

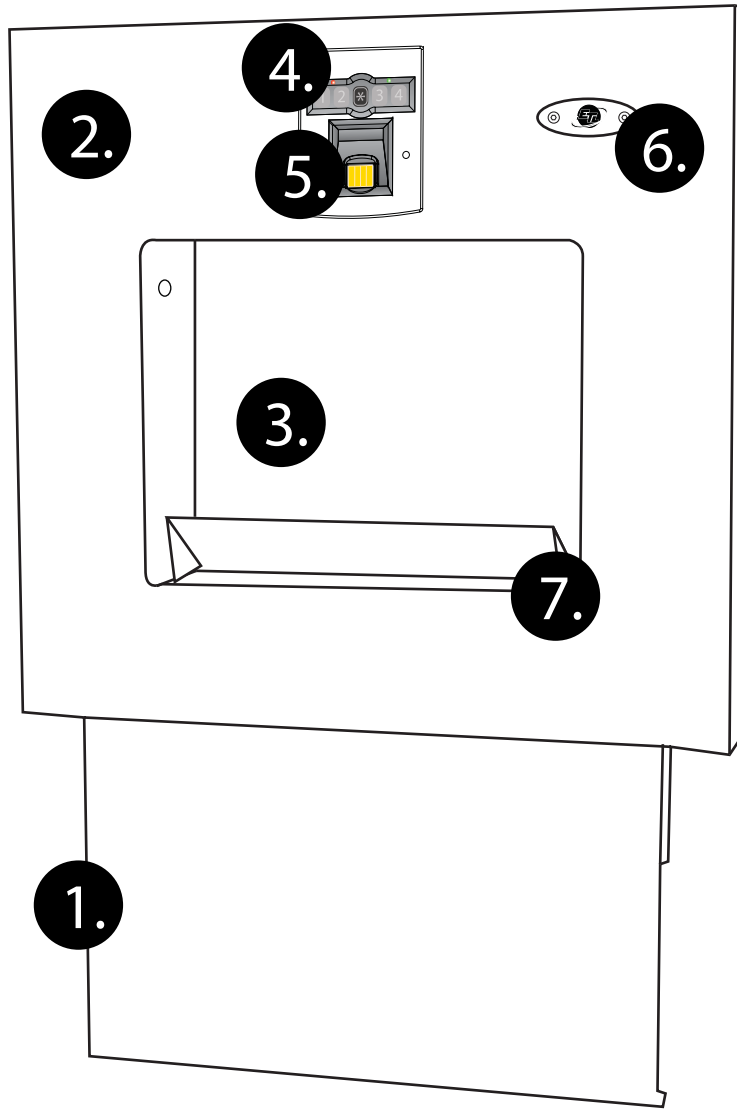
RECOMMENDATION: Before installing Wall Vault™ consult a licensed contractor to ensure safety and proper installation.



STANDARD FEATURES

1. Drop down quick access door >
2. 12 gauge stainless steel face >
3. Plush fabric interior >
4. Touchpad / Numeric Keypad >
5. Biometric Finger Sensor with 6 user storage
(Model 20700 Only) >
6. Emergency access key lock with 2 keys >
7. Hidden storage compartment >
8. Interior light >





INSTALLATION INSTRUCTIONS

The Wall Vault™ is specifically designed to be mounted into a standard residential wall with at least 2x4 construction and wall studs of at least sixteen (16) inches on center apart. It is recommended to use an industrial grade stud finder to locate studs and ensure the wall void is free of other obstructions (ie. water pipes, electrical conduit, etc.).

Installing the Wall Vault™ (Please Review Warnings & Recommendations Section)

1. Locate desired mounting location (please refer to IMPORTANT NOTICE section on pg. 4) (See Figure 1)
2. The insertable section of the Wall Vault™ is approximately 14" x 14". It is recommended to allow a 1/8" tolerance for each side of the Wall Vault™ making the hole size approximately 14.25" x 14.25". Once mounting location is determined, cut hole in wall accordingly. (Refer To Template) (See Figure 2)
3. Carefully place vault in wall. Do not forcefully insert. Vault should slide into wall easily (See Figure 3)
4. Open vault door
 - A. Biometric Wall Vault™ (Model 20700)**
 - a. Press the '*' button located on the Touchpad (See Figure 4A)
 - b. Wait five (5) seconds until beep, green LED light will flash once
 - c. Press default code, 1 2 3 4 4 and '*' button

* If the battery is dead, use emergency access key (refer to Operating Instructions)
 - B. Keypad Wall Vault™ (Model 20710)**
 - a. Input pin (default is 1 2 3 4) and press '#' (See Figure 4B)

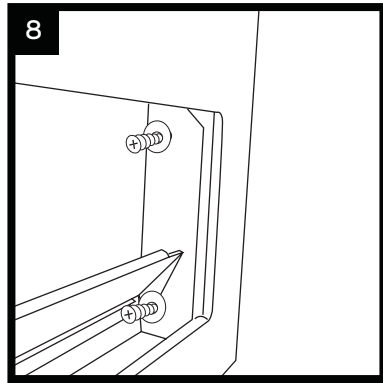
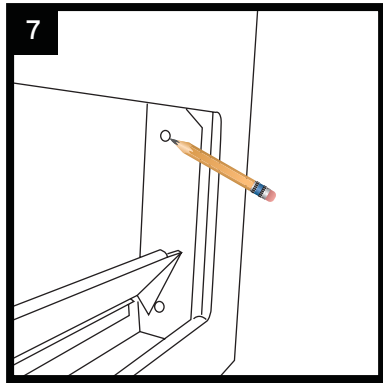
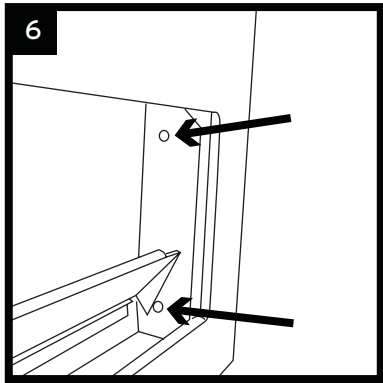
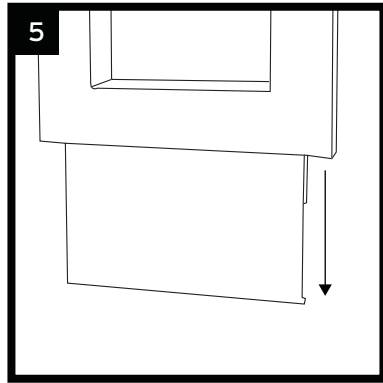
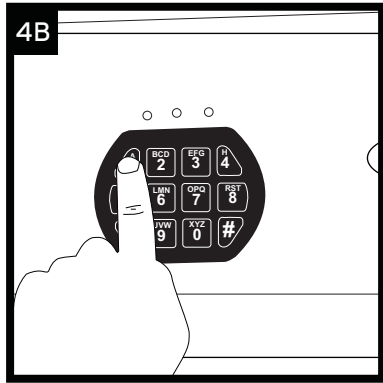
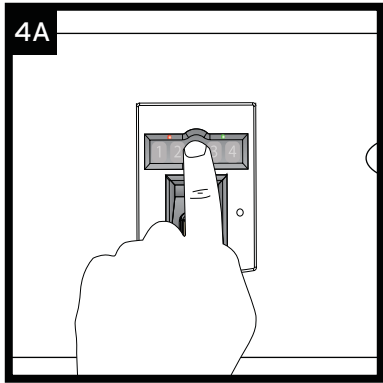
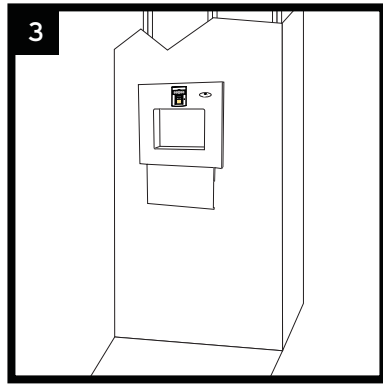
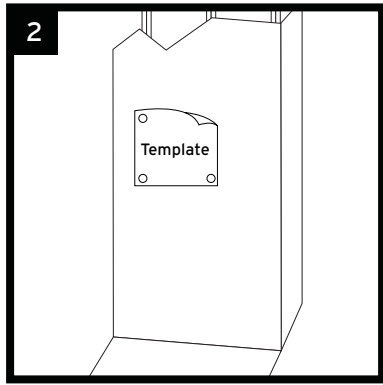
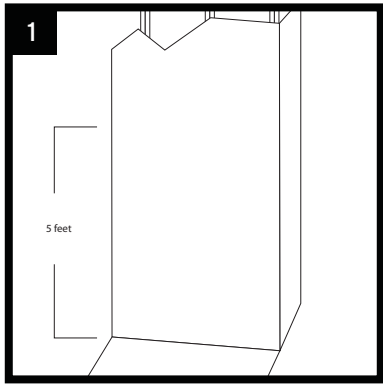
* If the battery is dead, use emergency access key (refer to Operating Instructions)
5. Vault door will drop (See Figure 5)
6. Locate the 4 mounting tabs, 2 on each side of vault walls (See Figure 6)
7. Mark holes for pre-drilling (See Figure 7)
8. Remove vault and pre-drill holes with a 1/8" bit
9. Reinsert vault and screw bolts and washers into pre-drilled holes through vault tabs (See Figure 8)

Biometric Wall Vault™ Trickle Charge Option: (Model 20700) See Important Note Below

Please consult a licensed electrician for questions.

Important: Terminal only accepts 12-14 VDC. DO NOT WIRE DIRECTLY TO TYPICAL HOUSE WIRING 110 VAC

1. Locate terminal jack beneath sticker at top side of vault
2. Wire to terminal a 12-14 VDC
3. Terminal will accept non-specific polarity



PROGRAMMING INSTRUCTIONS (MODEL 20700)

TouchPad

The numbered touchpad operates on the capacitance of your skin and is very accurate in sensing the pressure of a touched area. Very little pressure is needed to operate this sensor. However, when using the numbered touchpad, the entire area of the number should be covered with your finger. This will ensure an accurate number is input every time it is used.

Biometric Sensor

The fingerprint sensor maps your specific fingerprint using capacitance technology and computer algorithms. This technology is very accurate when a “good” fingerprint is captured, and is not easily fooled by counterfeits. In order to capture a “good” fingerprint, adequate pressure should be applied when first enrolling a new fingerprint, i.e. enough pressure should be applied so that the entire face of your finger is flat on the sensor. This will ensure that the sensor captures a good fingerprint and reduces the chance of an enrolled fingerprint being denied access.

Setting Administrator Pin and Fingerprint

Once you are ready to program your Wall Vault™, the Administrator will need to be chosen. The Administrator should be the primary user of the vault. The Administrator will be the only one allowed to add, delete, or modify users. For security purposes, there can only be one Administrator.

1. Press '*' button and wait for five (5) seconds.
2. Press '1' and hold for three (3) seconds. One (1) beep, followed by three (3) beeps will indicate the system is in Admin Mode.
3. Enter current pin number (default is 1 2 3 4 4) and press the '*' button
4. Enter new pin number (must be 5 digits in length and can not include '*' button as part of pin) and press the '*' button
5. Re-enter pin number followed by the '*' button. Green light will flash.
6. With green light flashing, immediately place finger on biometric sensor. Center and place finger parallel with biometric sensor pad. Once finger is recorded, beep will sound. The Administrator fingerprint is now recorded. This fingerprint will be required to add new users.
7. Biometric sensor will store one (1) Administrator fingerprint and five (5) additional user prints.
8. If at any point during Programming you see a Red light, repeat steps 1-6.



PROGRAMMING INSTRUCTIONS (MODEL 20700)

Adding Additional Users

Up to five (5) additional users can be added to the system. To ensure safety please keep all codes secret.

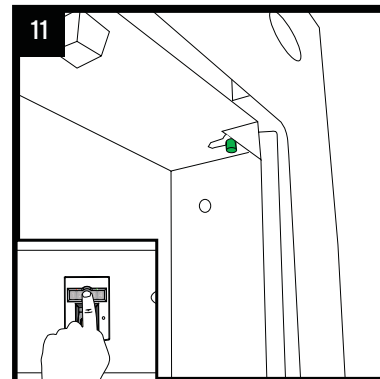
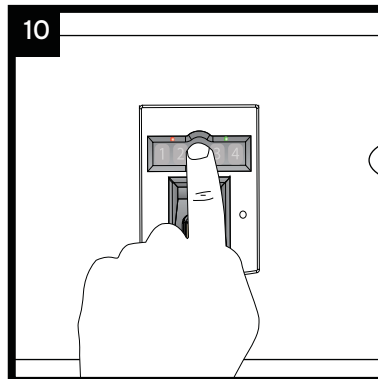
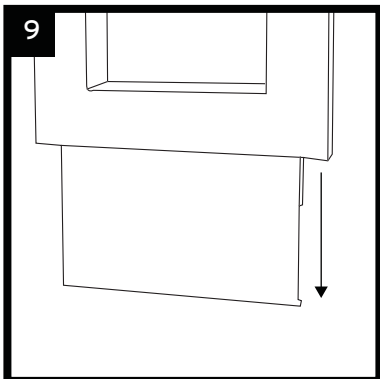
1. Press '*' button and wait for five (5) seconds
2. Press '2' and hold for three (3) seconds. One (1) beep, followed by three (3) beeps will indicate the system is in Enroll Mode. Green LED will flash
3. Center and place Administrator finger on biometric sensor. When fingerprint is recognized, a beep will sound. *Green light will continue to flash
4. Immediately place new finger on sensor. Once finger is recorded, beep will sound. The fingerprint is now recorded

* If invalid Administrator finger is entered the system will return to normal mode.

Performing Master Reset

A Master Reset should only be performed to clear the memory. Once the reset is performed, the system will return to factory defaults and all fingerprints are erased.

1. Open vault door (See Figure 9)
2. Press '*' button. Wait five (5) seconds (See Figure 10)
3. Press and hold 'reset' button (See Figure 11)
4. While holding the 'reset' switch, press the '*' button once. Continue to hold 'reset' button for 10 seconds until green light beeps 3 times
5. Administrator pin is now set back to default (1 2 3 4 4). ALL fingerprints have been cleared



PROGRAMMING INSTRUCTIONS (Model 20710)

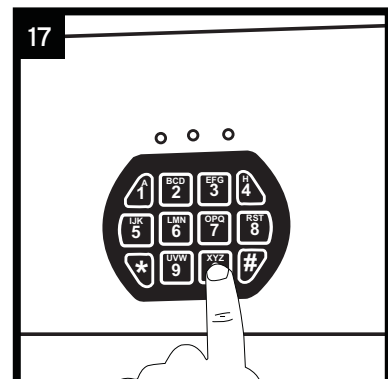
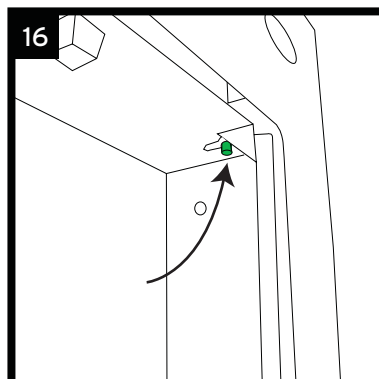
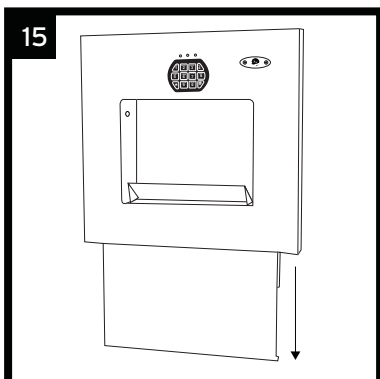
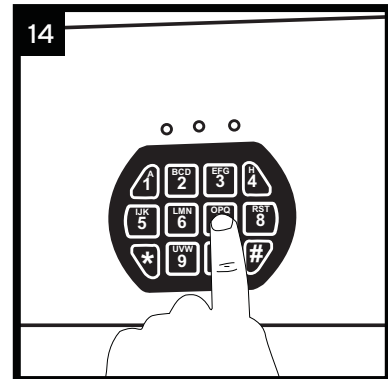
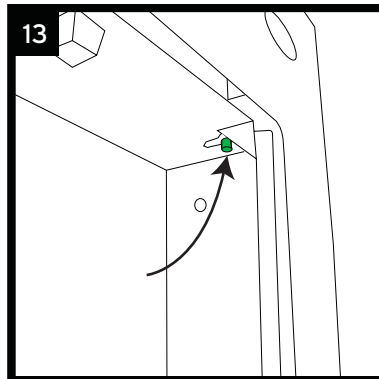
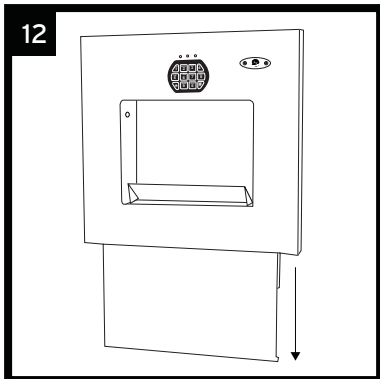
Setting Main Pin Number

The Wall Vault™ can store 2 access codes at a time. To program your access code, follow the instructions below.

1. Open vault door. Default code is 1 2 3 4 followed by the '#' key. Wait approximately ten (10) seconds until inner light turns off. (See Figure 12)
2. Press the reset button on the upper right of the inside of vault. System will beep once. (See Figure 13)
3. Input new pin followed by the '*' key. Your new pin can be 1-8 digits in length. (See Figure 14)
4. Your new pin is now recorded
5. To change pin again, repeat steps 1-4

Setting Secondary Pin Number

1. Open vault door. Default code is 1 2 3 4 followed by the '#' key unless Main Pin Number has already been set. Wait approximately ten (10) seconds until inner light turns off. (See Figure 15)
2. Press 0 0 on the numeric keypad
3. Press the reset button on the upper right of the inside of vault. System will beep once. (See Figure 16)
4. Input your secondary pin followed by the '*' key. Your pin can be 1-8 digits in length. (See Figure 17)
5. Your new pin is now recorded
6. To change pin again, repeat steps 1-4



OPERATING INSTRUCTIONS

Opening Door

If pin number has not been changed, default code is 1 2 3 4 4 (Model 20700) or 1 2 3 4 (Model 20710). If pin number has already been programmed, default pin will not work until system is reset.

Opening Door with Biometric Sensor (Model 20700)

Please refer to the programming instructions on how to program finger print(s). Once fingerprint is recorded, the vault can be opened by placing a programmed fingerprint on the biometric sensor.

1. Press '*' button located on the Touchpad (See Figure 18)
2. Place and hold finger on biometric sensor (See Figure 19)
3. Vault door will drop (See Figure 20)

Opening Door with Touchpad (Model 20700)

1. Press the '*' button located on the Touchpad
2. Wait five (5) seconds until beep, green LED light will flash once
3. Press current pin number and then press 'enter' button or '*' key
4. Vault door will drop

Opening Door with Numeric Keypad (Model 20710)

1. Enter pin number followed by the '#' key
2. Vault door will drop

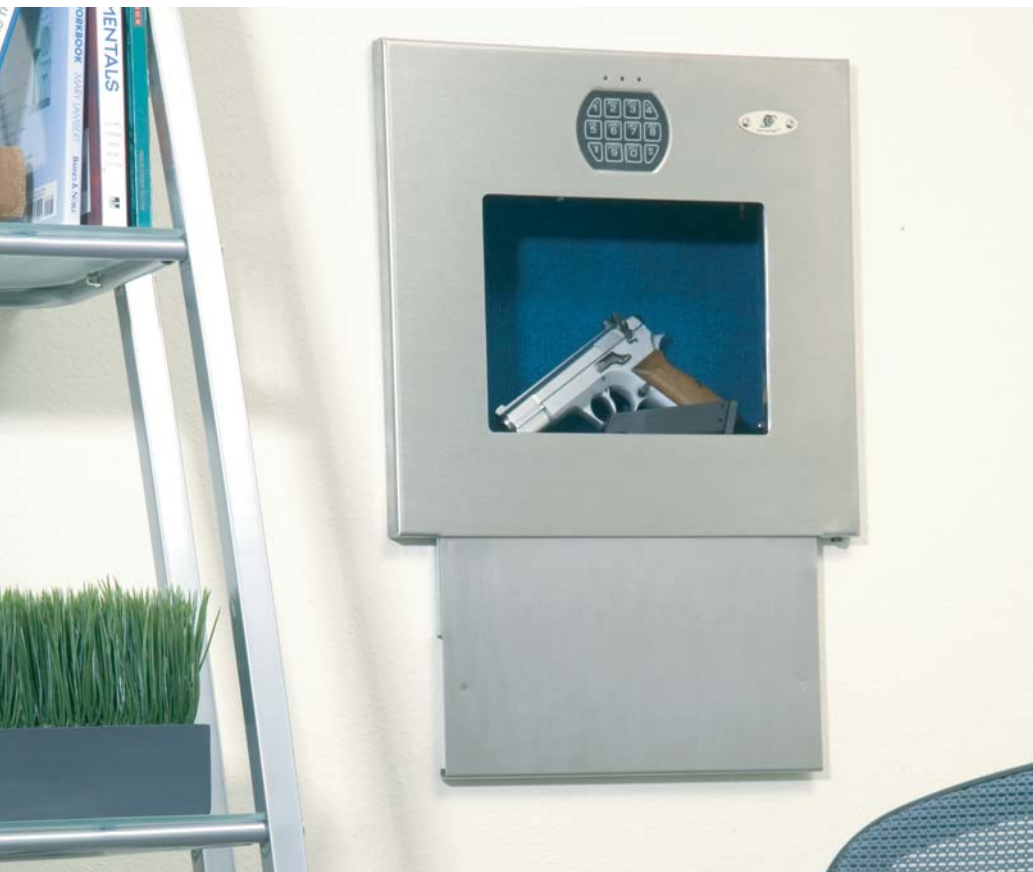
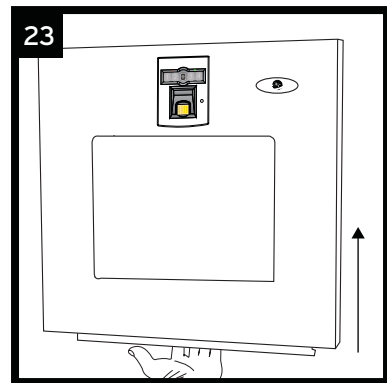
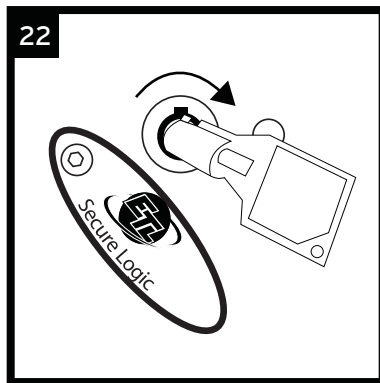
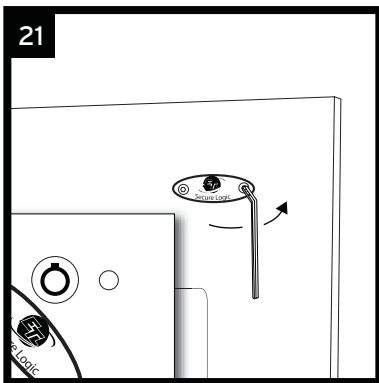
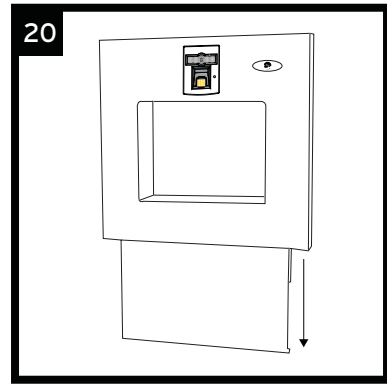
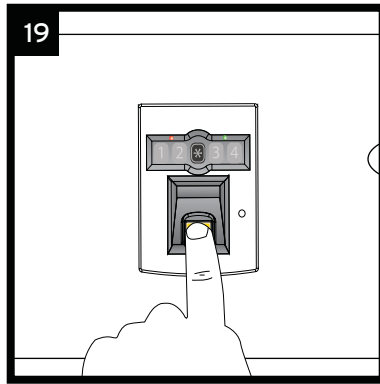
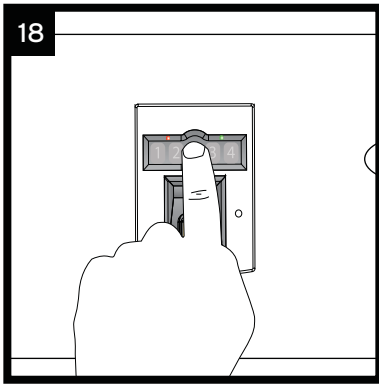
Opening Door with Emergency Key Access

In an emergency, or electronic failure, the vault can be accessed by a key. The key slot is hidden behind the logo name plate on the face of the vault.

1. Using Allen Wrench, unscrew logo plate (See Figure 21)
2. Turn key clockwise to unlock (See Figure 22)
3. Door will drop

Closing the Vault Door

1. Slowly lift door pushing up on the bottom of the door (See Figure 23)
2. Push upwards gently until door lock engages



MAINTENANCE INSTRUCTIONS

Charging Batteries

When battery is low, an Alert beep will sound immediately following system startup.

1. Plug AC Adapter into charger port (See Figure 24 for Model 20700 - See Figure 25 for Model 20710)
2. Charge overnight

Replacing the Battery

The Wall Vault™ uses a 12 volt battery. After several years of continuous use, the battery may decrease in efficiency and need replacing.

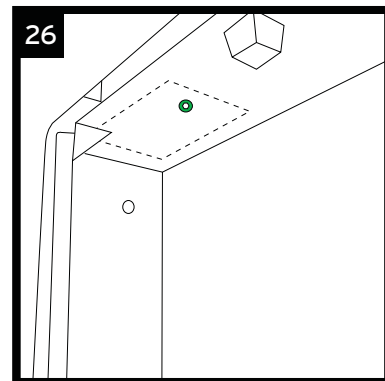
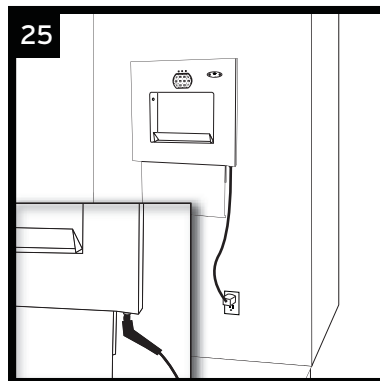
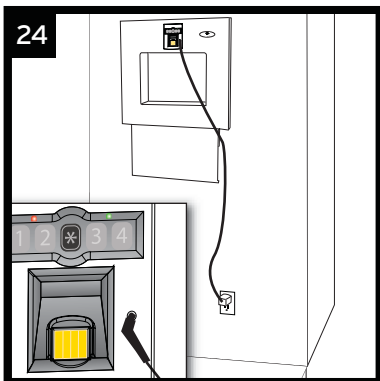
1. Open Wall Vault™
2. Locate battery case on the upper left side (See Figure 26)
3. Remove allen bolt on battery case cover
4. Replace with standard 12 volt 4.5 A battery no larger than 3.75" x 4.25" x 3.25"
5. Close Wall Vault™ door
6. Activate system - system will retain user settings

Cleaning Wall Vault™ & Sensor

The face of the Wall Vault™ can be cleaned using approved stainless steel cleaner.

To clean the biometric sensor or touchpad, use a clean cotton cloth and gently wipe clean.

DO NOT SPRAY CLEANING SUBSTANCES NEAR OR ON ELECTRONIC COMPONENTS



SECURITY FEATURES

Function	Possible Solution
<p>Tamper Lock Out</p>	<p>When an incorrect code is attempted 5 consecutive times, the Wall Vault™ will go into Lock Out Mode for three (3) minutes. One (1) long beep, followed by four (4) short beeps will indicate Lock Out Mode is activated. If the '*' button is touched during the three (3) minute period, the time will start over. The vault can not be opened with the touchpad or numeric keypad during this time.</p>
<p>Tamper Alert</p>	<p>After a Tamper Lock Out has occurred, the lock will sound a four (4) beep tamper alert signal each time the vault is activated until the system is accessed using a valid fingerprint or pin number.</p>
<p>Sleep Mode</p>	<p>To conserve battery life, the system will go into Sleep Mode if it is idle for longer than 10 seconds.</p>



TROUBLE SHOOTING

Problem	Possible Solution
Upon pulling it out of the box, electronics do not work.	<ol style="list-style-type: none"> 1. Charge battery for 12 hours. 2. If charging the battery does not activate electronic panel, call Customer Service.
Power/touchpad are operational, but door does not drop.	<ol style="list-style-type: none"> 1. Open Wall Vault™ door with Emergency Access Key (see Operating Instructions). 2. Gently pull door downward with key turned to the right. 3. Be sure slide rails and door are free from obstruction before re-closing.
Door opens very slowly, or only partially.	<ol style="list-style-type: none"> 1. Gently pull door downward until door is in the full open position. 2. Be sure slide rails and door are free from obstructions. 3. Slightly oil bearings with silicone based spray. Do not lubricate bearings more than once per year.
I forgot my Pin number.	<ol style="list-style-type: none"> 1. Open vault with Emergency Access Key (see Operating Instructions). 2. Change pin number (See Programming Instructions) <p>Model 20700 Only</p> <ol style="list-style-type: none"> 2. Perform Master Reset to clear system and return to default settings (see Operating Instructions).
System continues to register an invalid fingerprint, although nothing is pressed on the sensor.	<ol style="list-style-type: none"> 1. Sensor is dirty or has accumulated moisture - refer to maintenance instructions.

ONE YEAR LIMITED WARRANTY

The ETL® SecureLogic™ Wall Vault™ is warranted to the original consumer for one (1) year against manufacturer defects in materials or workmanship. These warranties are not assignable or transferable to any other person. In the event of failure ETL® will, at its election, repair, replace or make appropriate adjustment where ETL® inspection discloses any defects occurring in normal usage given that the consumer is (a) the original owner of the SecureLogic™ Wall Vault™, (b) obtains a Return Authorization number prior to shipment, and (c) returns the product via prepaid freight to ETL®. Proof of purchase from the original consumer (original sales receipt) must accompany all warranty claims. To obtain warranty service contact ETL®, either through your Dealer, Catalog, Home Center or E-Tailer, or by writing ETL® at the address below or by calling 209-529-3546 within the USA. Defects or damage caused by use of other than genuine ETL® parts are not covered by this warranty. Please do NOT return your product without first contacting ETL®.

PRODUCT REGISTRY

All products must be registered within 30 days of purchase in order to be covered by the ETL® warranty. Products may be registered by completing and returning the included warranty card, or by accessing www.etlproducts.com and submitting product purchase information online.

CONDITIONS

This warranty does not cover loss or damage of any kind resulting directly or indirectly from alteration, misuse or abuse of the product, or from its installation or removal (including scratching). ETL's liability under this warranty shall not in any case exceed the contract price for the product. ETL® reserves the right to make changes and improvements in its products without incurring any obligation to similarly alter products previously purchased. WARRANTY SHALL NOT EXTEND TO INCIDENTAL OR CONSEQUENTIAL DAMAGES INCURRED AS A CONSEQUENCE TO ANY DEFECTS COVERED BY THIS WARRANTY, nor shall it apply to normal wear and tear, or when misuse, negligence, or accident are evident. This warranty is in lieu of all other warranties, express or implied. No one is authorized to assume any other liability for ETL® in connection with this product. This warranty gives you specific rights. You may have other rights under state law. Warranty is only valid within the U.S.

ETL®

2351 Tenaya Drive
Modesto, CA 95354

209-529-3546

